



Yellow Perch: Egg Incubation, Hatching, Fry Estimation and Stocking

Paul O'Bryant, Research Assistant

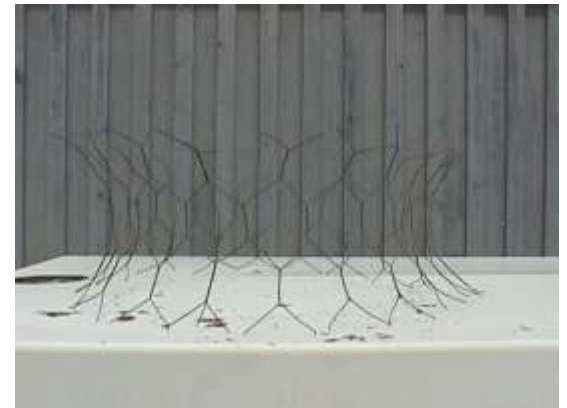


What do I do with it?



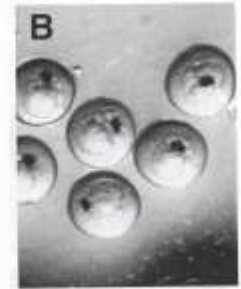
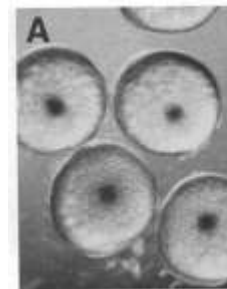
Incubation

- Estimate number of eggs (optional)
- Check for fertilization
- Transfer to incubation tank
- Ribbons incubated individually in small tanks (40 L/10 g) for 10-14 days at 12 °C/55 °F
- Low daily dose of formalin (25-50 ppm) in well water
- Pond water incubation in tanks unsuccessful
- Maintain optimum WQ
- 5-20 days depending on Temperature



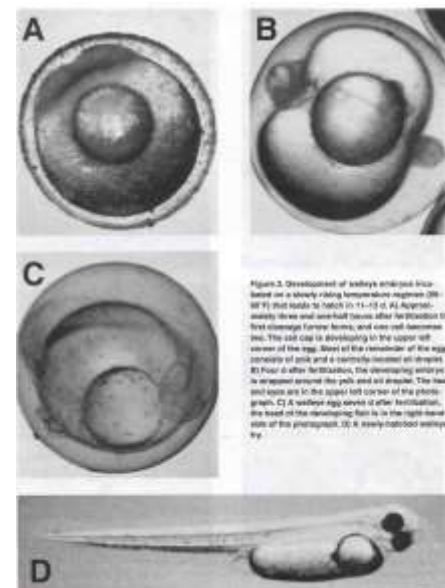
Indoor Egg Incubation

- Egg will turn brown and fall apart during development
- Dead eggs will fungus
- Monitor eggs with microscope
- Look for dark eyes



Hatching Fry

- Jim Held method – WI
 - Use drill and paint stirrer to help release larvae
- OSU method
 - Increase aeration to agitate egg ribbon
 - Let swim up for 3 days
 - Monitor yolk sac



Volumetric Measurement

- Siphon fry from culture tank into a bucket
- Determine volume of bucket
- $V = 3.14 \times R^2 \times H$
- Use light aeration to evenly mix fry
- Take 3 small subsamples (100 mL)
- Count number of fry in each, obtain average number
- convert sample count to fry per liter



Stocking Yellow Perch Fry

- Take fry to fertilized pond
- Fry do not like direct sunlight
 - Cover bucket
- Closely match water temperature, pH
- Let fry acclimate, do not leave
- Watch oxygen
- Release





Contact Information

Paul O'Bryant

obryant.4@osu.edu

Research Assistant

OSU South Centers

1864 Shyville Road

Piketon, OH 45661

740-289-2071

800-297-2072 (Ohio Only)

<http://southcenters.osu.edu/aqua>

